

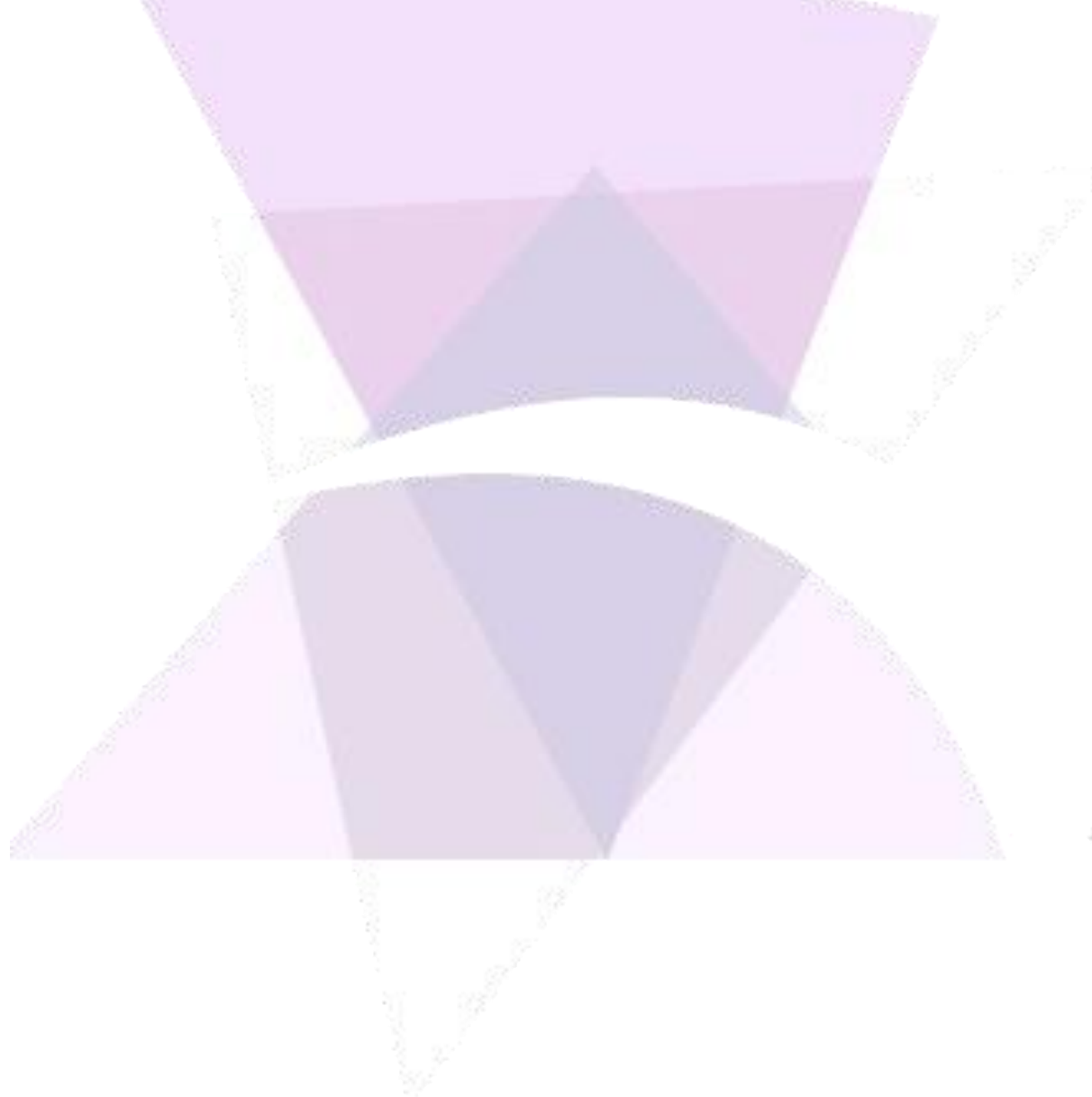


# License Guide

## Document Information

Software Version:	4.0.2.0
Creation Date:	17 February 2021

1. Scope .....	3
2. Summary.....	3
3. Registering a License .....	4
4. Deactivating License .....	6
5. Re-Registering a License .....	9
6. Certificate of authenticity.....	10



## 1. Scope

This document will explain how the ADISRA SmartView license operates, how to register a new license, how to deactivate and use the same license on another machine, or reactivate a used the license on a machine previously licensed.

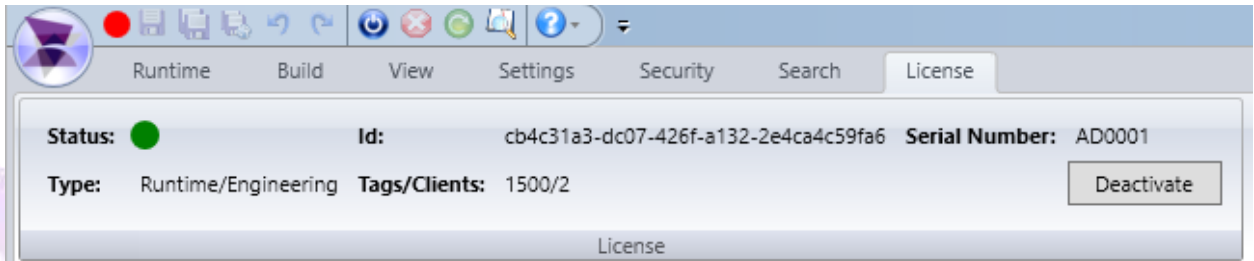
## 2. Summary

The ADISRA SmartView license authenticates a single machine to execute the ADISRA SmartView software. The license cannot be transferred to a different machine since it is associated with the unique components of the machine that issued the license code.

The license is generated using the machine's hardware identification that is based on 3 hardware components: CPU, HDD, and Mother Board. The component-based license ensures that the software will only work on that specific machine. If the user plans to change any of the 3 hardware components, we recommend the user contact ADISRA to deactivate the license and reactivate it after the hardware component has been replaced.

The ADISRA team securely generates the license with the customer's interaction and the steps are explained in detail later in this document. It can be deactivated at any time, but if deactivated the customer must contact ADISRA to reactivate the license.

Information about your license is available on the License ribbon. The information available is the license type, the maximum clients and tags number, and the license status. The license status is represented by a circle color: green means activated, yellow means trial version, and orange means there are 5 days remaining until trial expiration.

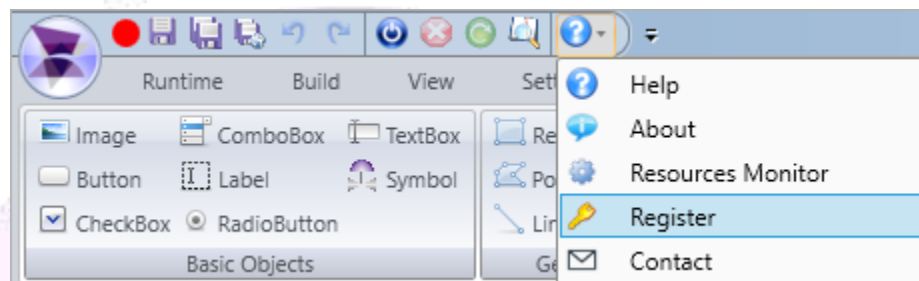


### 3. Registering a License

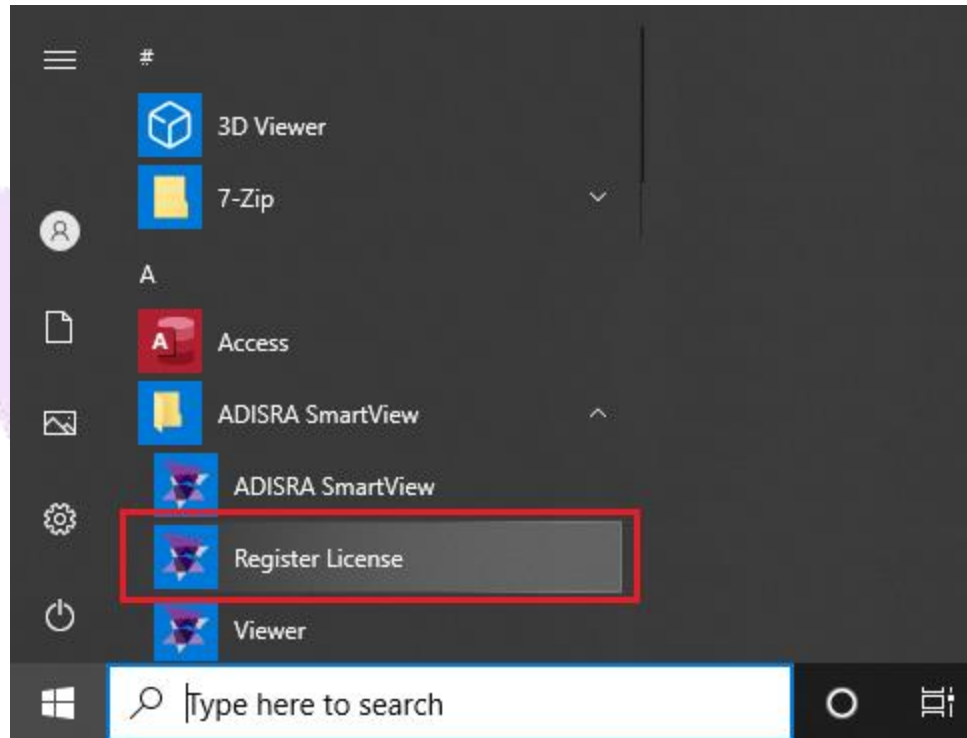
ADISRA SmartView gives the user 30 days development trial access when it is first installed. When the 30 days expire, a permanent license will need to be purchased to execute the software. The instructions below will show the steps to register a new license.

There are 2 ways to open the “License Register” window:

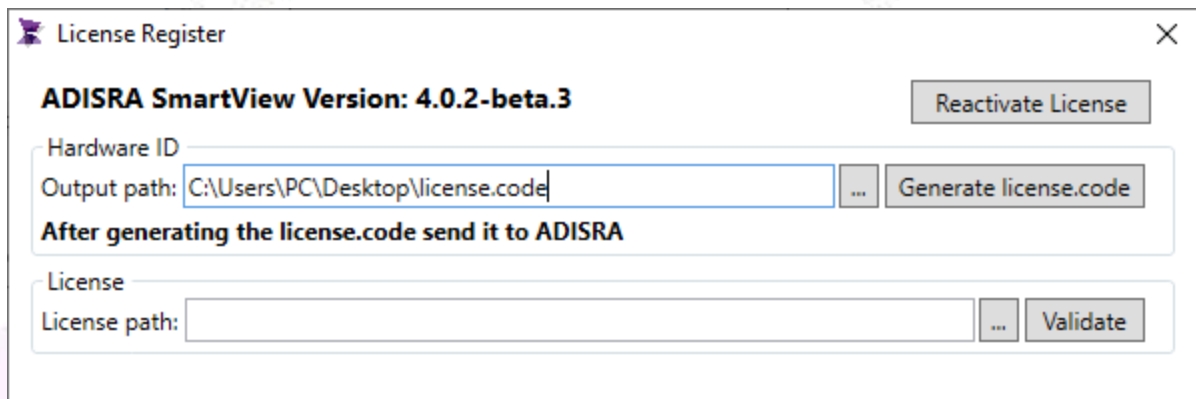
- a. Open the Help Menu and click the Register button, as shown in the screenshot below:



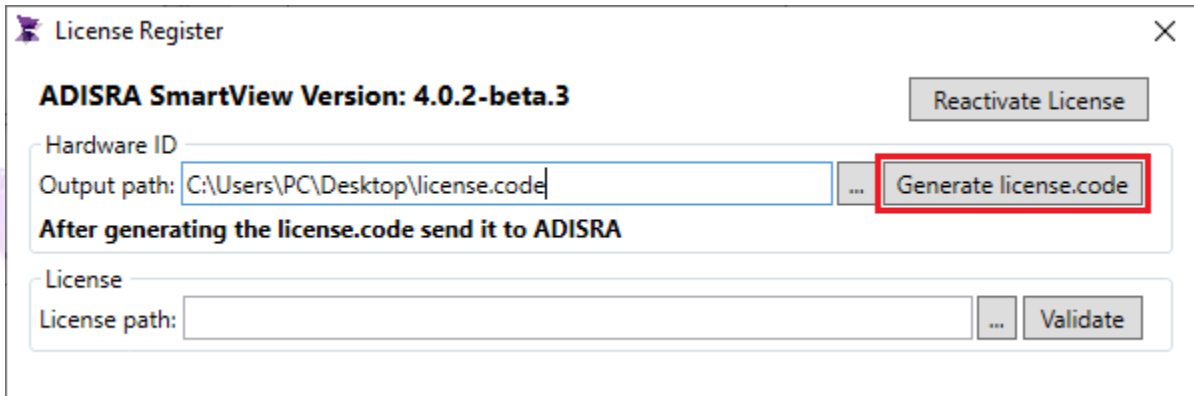
- b. Go to the Windows toolbar: Start > All Programs > ADISRA SmartView > Register License:




By using either method a or b, the following window will appear.




1. Click the button labeled Generate license.code to create the text filename with the Hardware ID. The file location will be displayed in the text box called Output Path.

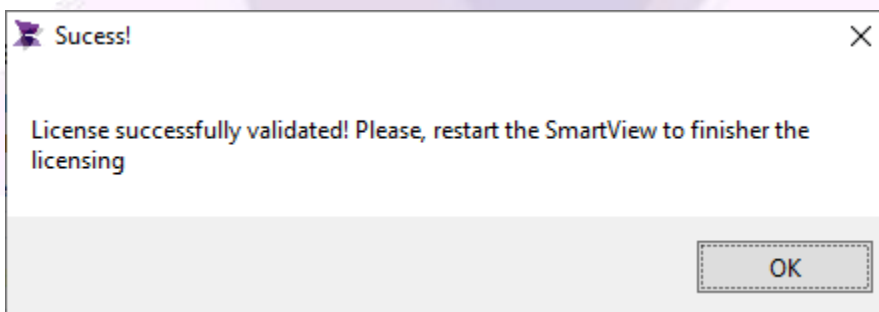


**Note:** the user can change the Output Path by clicking on the  button next to the Output Path text box.

2. Attach the text file named “license.code” to an email and send it to [info@adisra.com](mailto:info@adisra.com).

The software vendor will send back a License Key File that matches the Hardware ID. Download and save the license file to your storage drive. It is important to remember the license file location.

3. Enter the license key file location in License Path text box or browse to locate it by clicking on the  button and then click the Validate button.
4. You will be prompted to confirm the operation once the program accepts or validates your License Key.



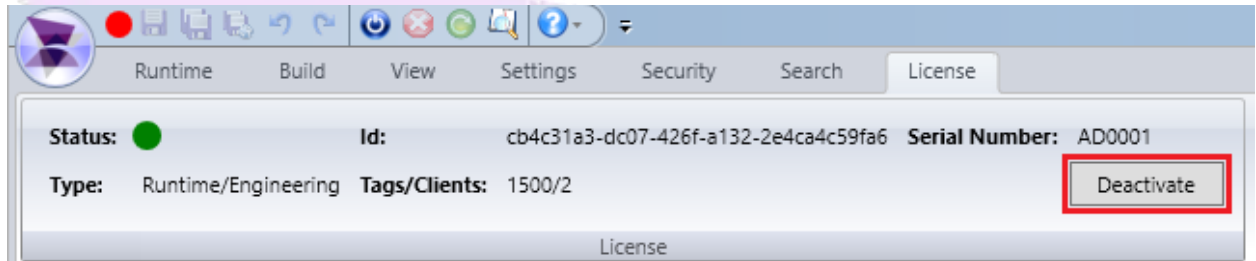
You are now ready to use ADISRA SmartView.

Close the Register License window and run ADISRA SmartView again.

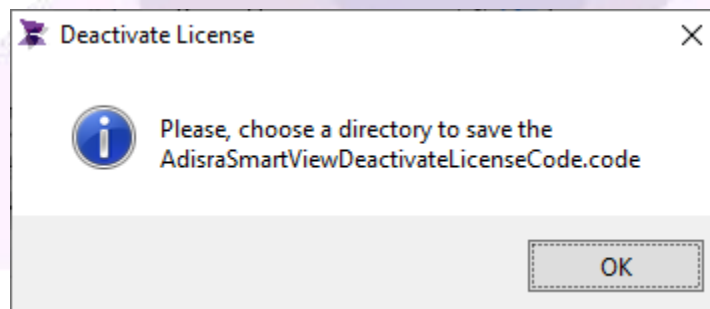
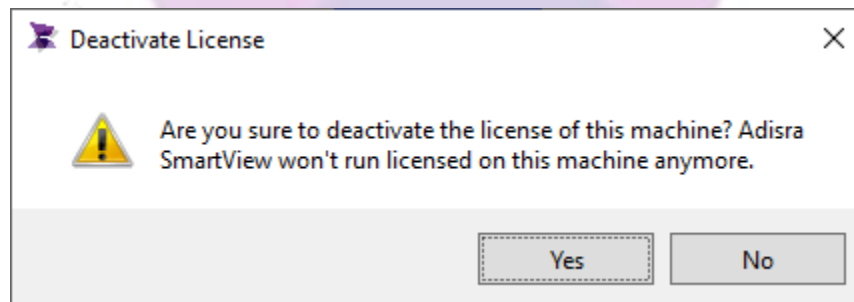
## 4. Deactivating License

ADISRA SmartView is registered to a specific machine. In order to use the license on another machine, it will be necessary to deactivate the current license. To execute the deactivation procedure, please follow the steps below:

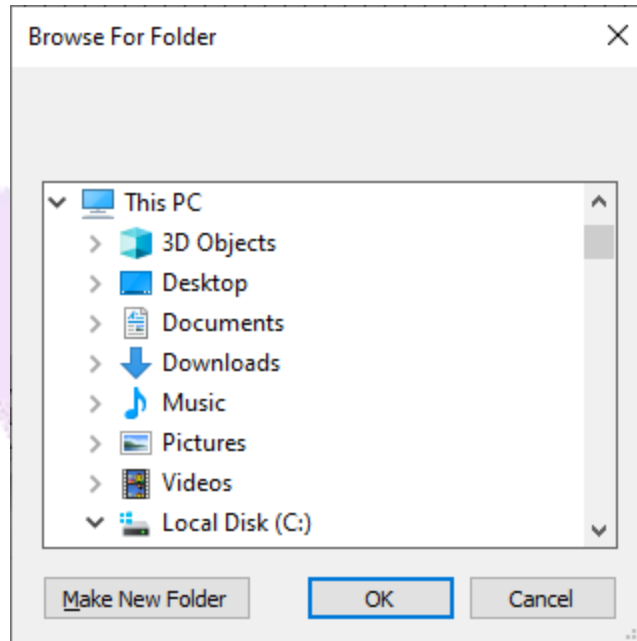
1. In the ADISRA SmartView License Ribbon, select the option “Deactivate”:



2. It will open a dialog window confirming the operation, select “Yes” to continue:



3. After confirming Deactivation, a browser window will open to select the location where the file will be saved.



4. When the file is created, please send it to [info@adisra.com](mailto:info@adisra.com). We will send back a license file to be registered in ADISRA SmartView on another machine by following steps 3 to 5 in Chapter 3 “Registering a License”.

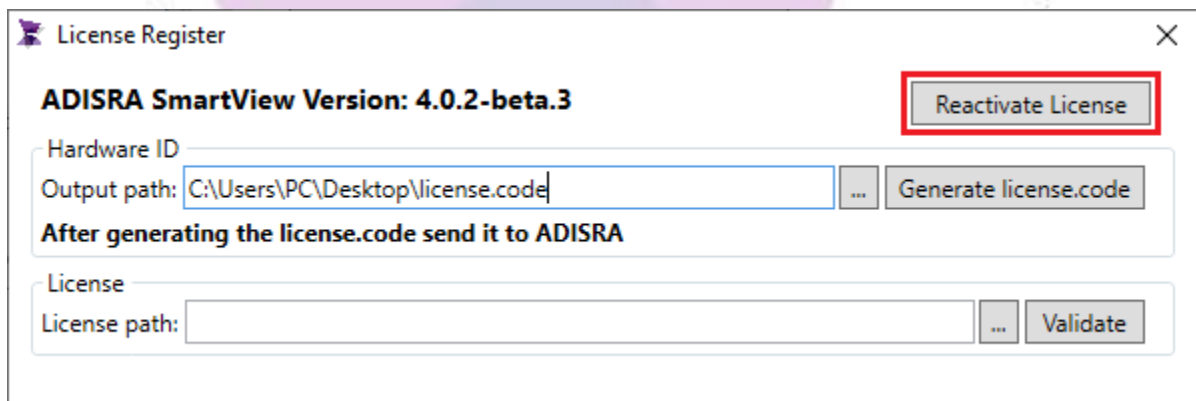


## 5. Re-Registering a License

The user will need to follow a slightly different process to register a new license on a machine that had previously been registered but the license deactivated.

First, follow the steps 1 and 2 in Chapter 3 "Registering a License". Then, contact your software vendor support to inform them of the intent to re-register a license on a previously licensed machine. If everything is okay, the software vendor support will send back a code to Reactivate the license on that machine.

Open the "License Register" window and select the option "Reactivate License" as shown in the image below.



The screenshot shows the "License Register" window for ADISRA SmartView Version: 4.0.2-beta.3. The window contains the following elements:

- Hardware ID:** A text input field.
- Output path:** A text input field containing "C:\Users\PC\Desktop\license.code" with a browse button ("...") and a "Generate license.code" button.
- After generating the license.code send it to ADISRA:** A section header.
- License:** A text input field.
- License path:** A text input field with a browse button ("...") and a "Validate" button.
- Reactivate License:** A button highlighted with a red box in the top right corner.

Insert the code sent by the software vendor in the License path box and select "Validate". A message stating the registration was successful will appear.

## 6. Certificate of authenticity

When the user acquires a license for ADISRA SmartView, the software vendor/ADISRA will generate a certificate of authenticity for that license, this certificate contains the name or the company name and the email of whom the license is destined for, and some unique information: the serial number of the license and the hardware ID associated with the license.

See below an example of a certificate of authenticity:

