



Documentation Guide

Document Information

Software Version:	4.0.3.3
Creation Date:	16 November, 2020
Last Edit Date:	04 April, 2022
Version:	1.3

Table of Contents

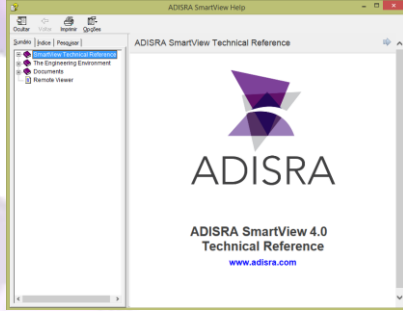
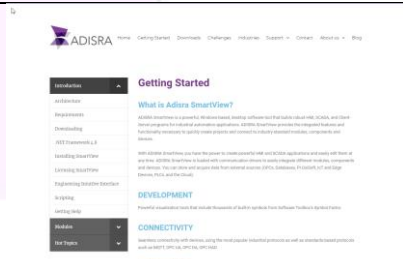
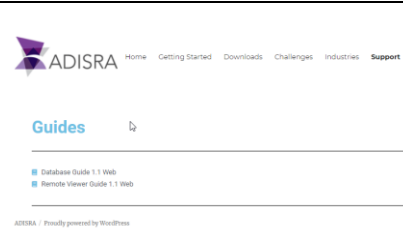
1. Scope	3
2. Summary	3
3. Help	5
3.1. Contents	8
3.2. Index	9
3.3. Search	10
3.4. Using the Help	10
3.4.1. Dynamic fill	10
3.4.2. System Function Library	13
4. Web Site	14
4.1. White Papers	14
4.2. Web Help	15
4.3. Videos	16
4.4. C# Script	18
4.5. Getting Started Guide	20
5. New Documentation	22


1. Scope

The Documentation Guide explains how to access the different documentation types for ADISRA SmartView. Documentation is located on the ADISRA website, YouTube, and some accompany the ADISRA SmartView software installation. Please look at the following chapters to get to know them better.

2. Summary

The ADISRA SmartView is a powerful software with many different possibilities and the documentations are a great ally for the user to make the most of the ADISRA SmartView. These documentations are available on the ADISRA SmartView installation, on the ADISRA website and in video formats also on the website and YouTube.

Content	Location	Preview
<p>Help (Complete Documentation)</p>	<p>ADISRA SmartView Installation Folder. Can be opened from the software.</p>	
<p>Help (High Level Documentation organized by topics in a web format)</p>	<p>ADISRA website https://adisra.com/getting-started/</p>	
<p>White papers (Organized by topics)</p>	<p>ADISRA website https://adisra.com/guides/</p>	

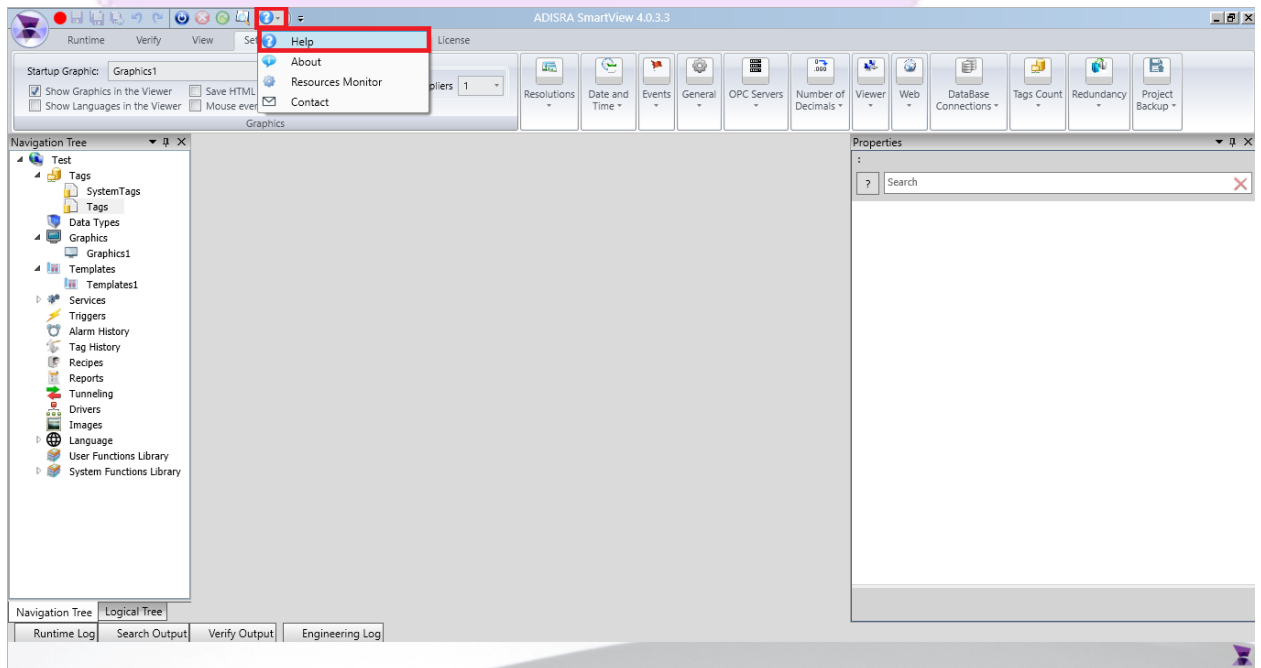
<p>Videos (Website)</p>	<p>ADISRA website https://adisra.com/video-library/</p>	
<p>Videos (YouTube)</p>	<p>ADISRA SmartView playlist on YouTube https://www.youtube.com/playlist?list=PL8e-qPeKpZH69IyVSVimmH6RnQBLx1ES4</p>	
<p>Getting Started Guide (ADISRA SmartView Tutorial)</p>	<p>ADISRA website http://adisra.com/quick-start/ Can be downloaded from the link above. Just scroll down the page to find it.</p>	
<p>C# Script Reference</p>	<p>ADISRAR website https://adisra.com/quick-start/ Can be downloaded in the same link of the ADISRA SmartView Getting Started Guide. Just need to change to the C# option to find the download link or search the White Papers option inside the Support tab.</p>	

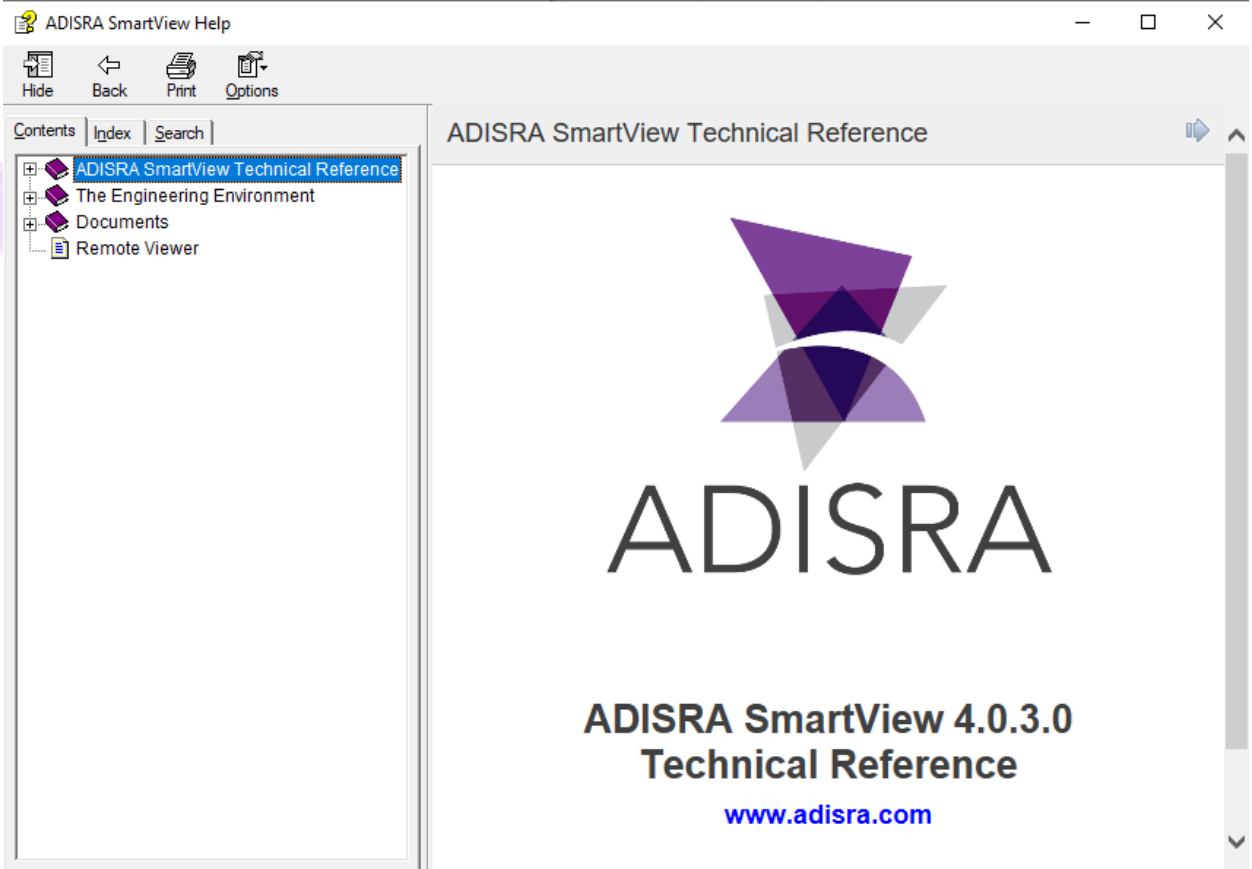
3. Help

The Help file is a tool which contains pages with information and instruction on all ADISRA SmartView functions and configurations.

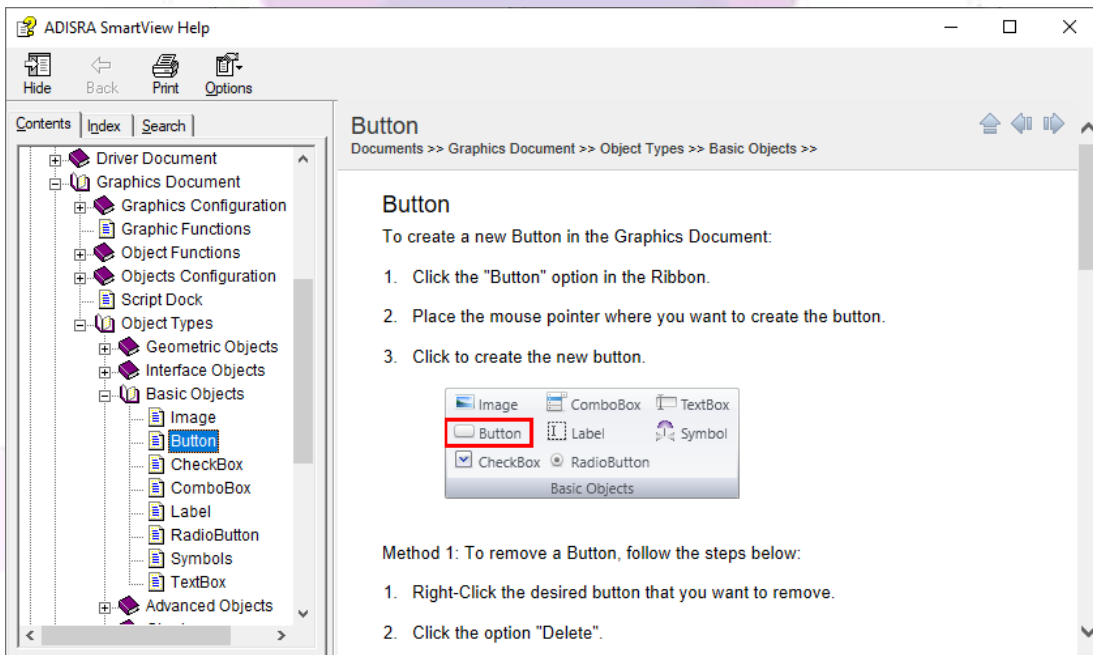
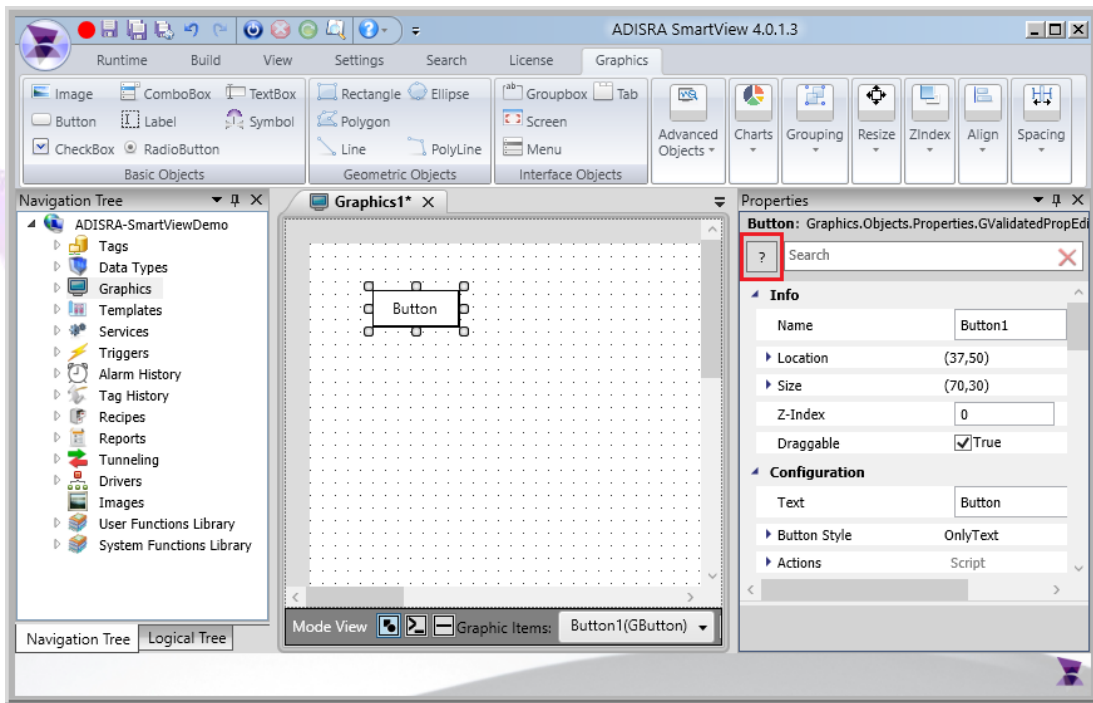
There are two (2) ways to open the help file from ADISRA SmartView Engineering Tool:

Quick Access Toolbar:





You may also open the Help file by clicking the “?” button on the properties Grid. In this example, a button object is selected and when the “?” is pressed, it will automatically open the button object page in Help:

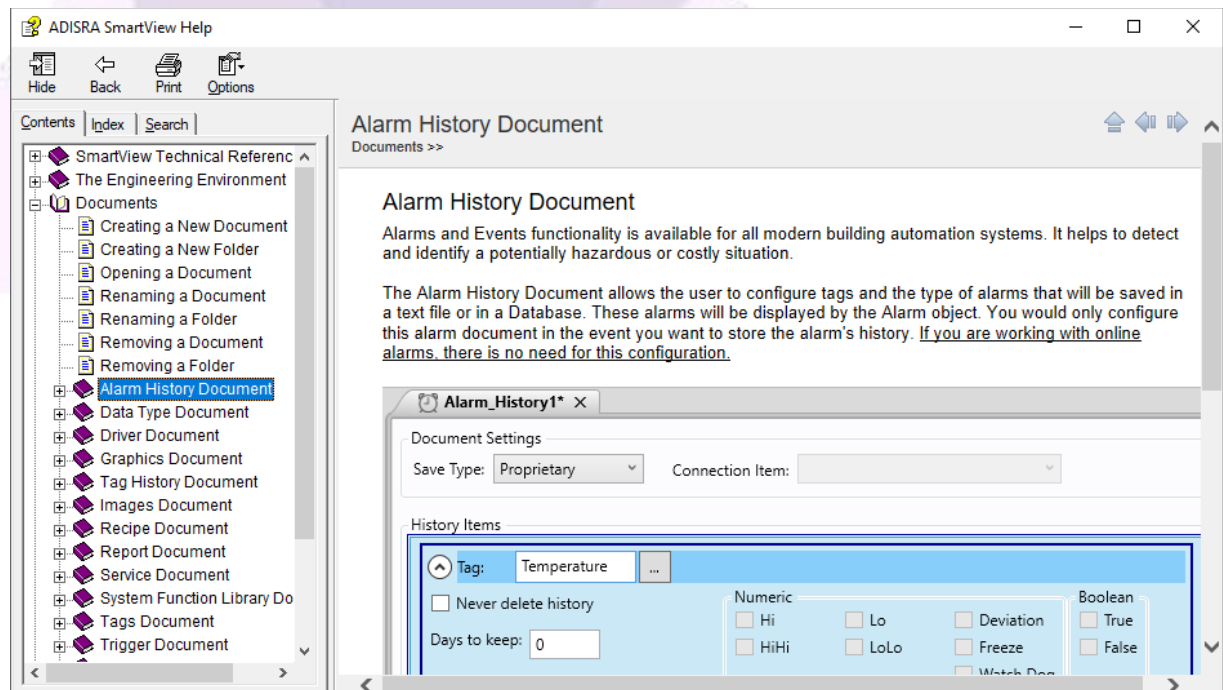
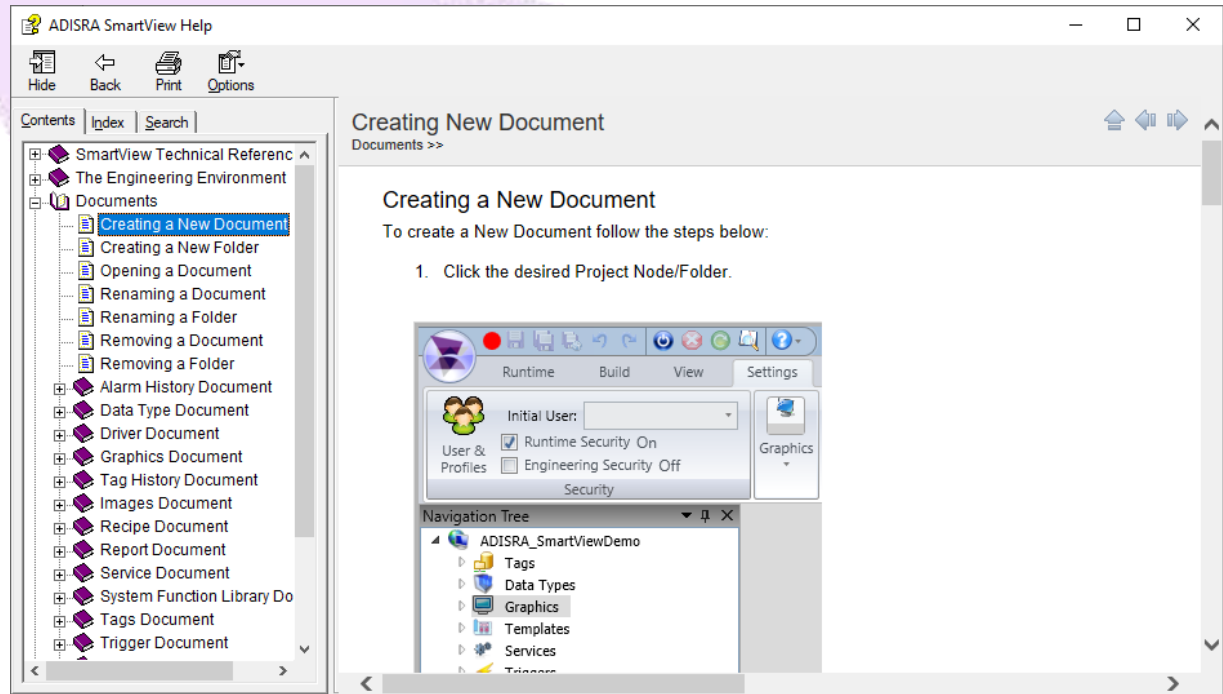


The help file has three (3) tabs:

1. Contents
2. Index
3. Search

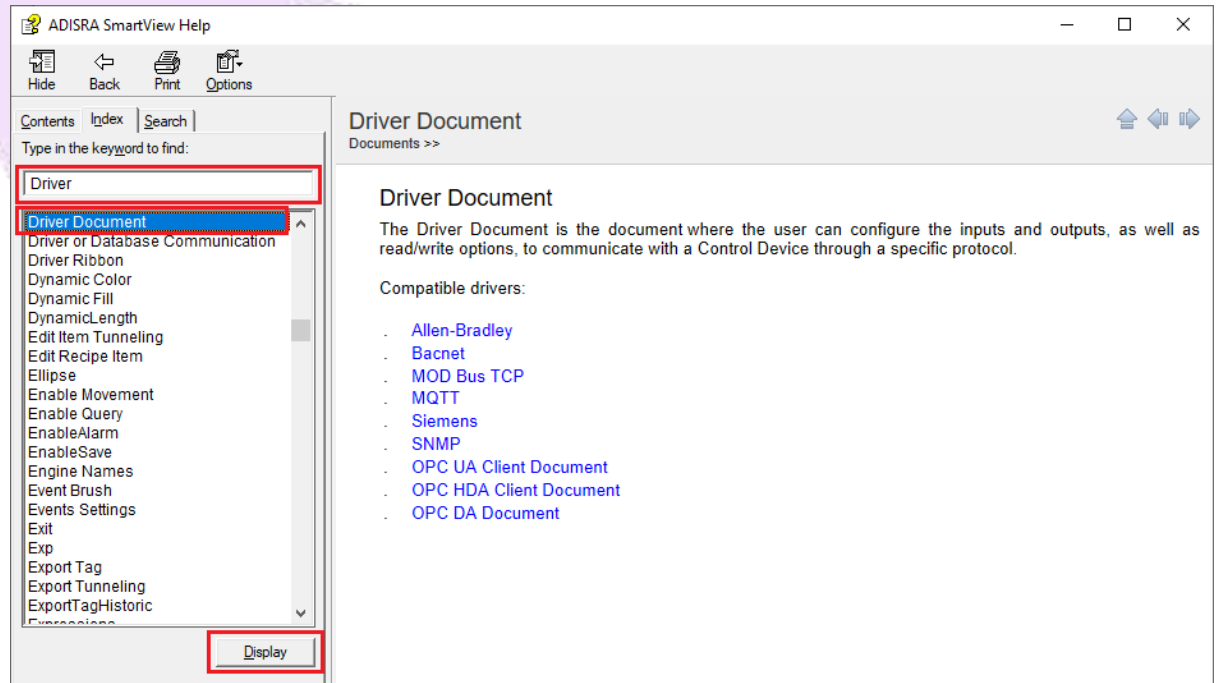
3.1. Contents

The Contents tab holds the entire documentation organized by categories in a tree view. To navigate between pages, expand the category to see the pages and other categories. It is important to understand that the category itself is also a page, please see two examples below:



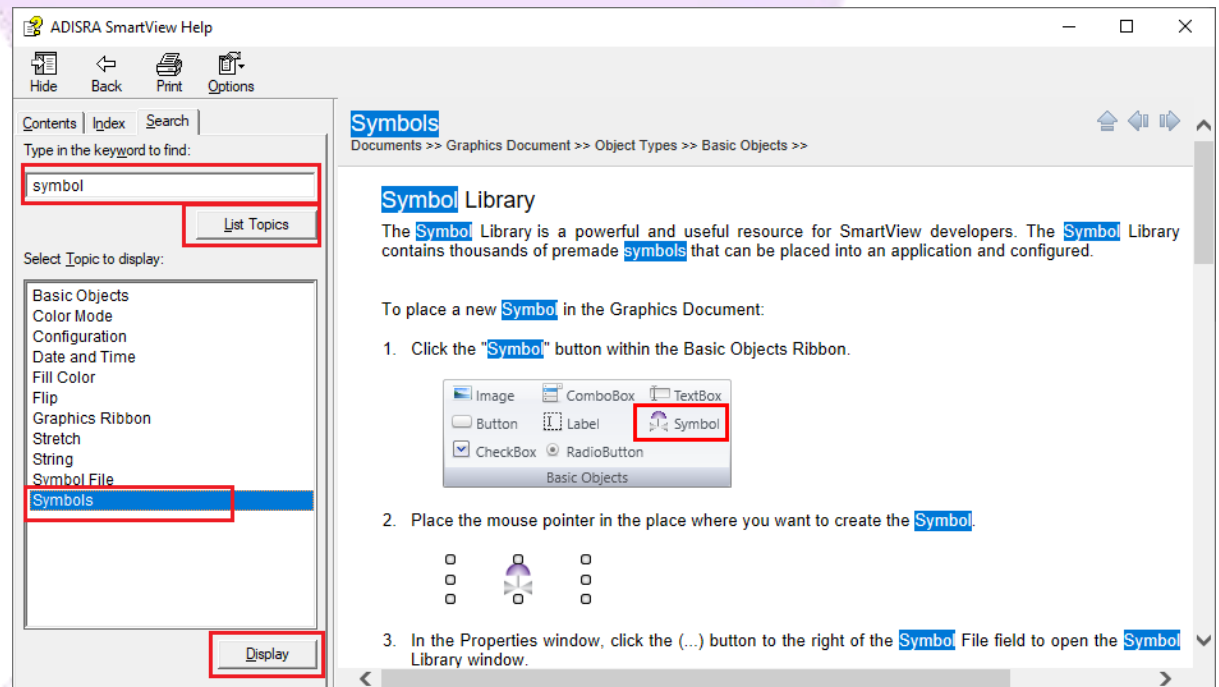
3.2. Index

The Index tab lists the pages organized in alphabetical order. To open a page, select it and click the “Display” button or simply double click a topic. There is also an input field where the title of the topic can be typed to find it easily.



3.3. Search

The Search tab locates pages by searching words that are present inside the page. Use the input field to type in the word being searched and press enter key or click the “List Topics” button. All the pages that contain the searched word will be listed. Then select one topic and click the “Display” button or simply double click the topic. The selected page will open, and every searched word occurrence will be highlighted in the page.

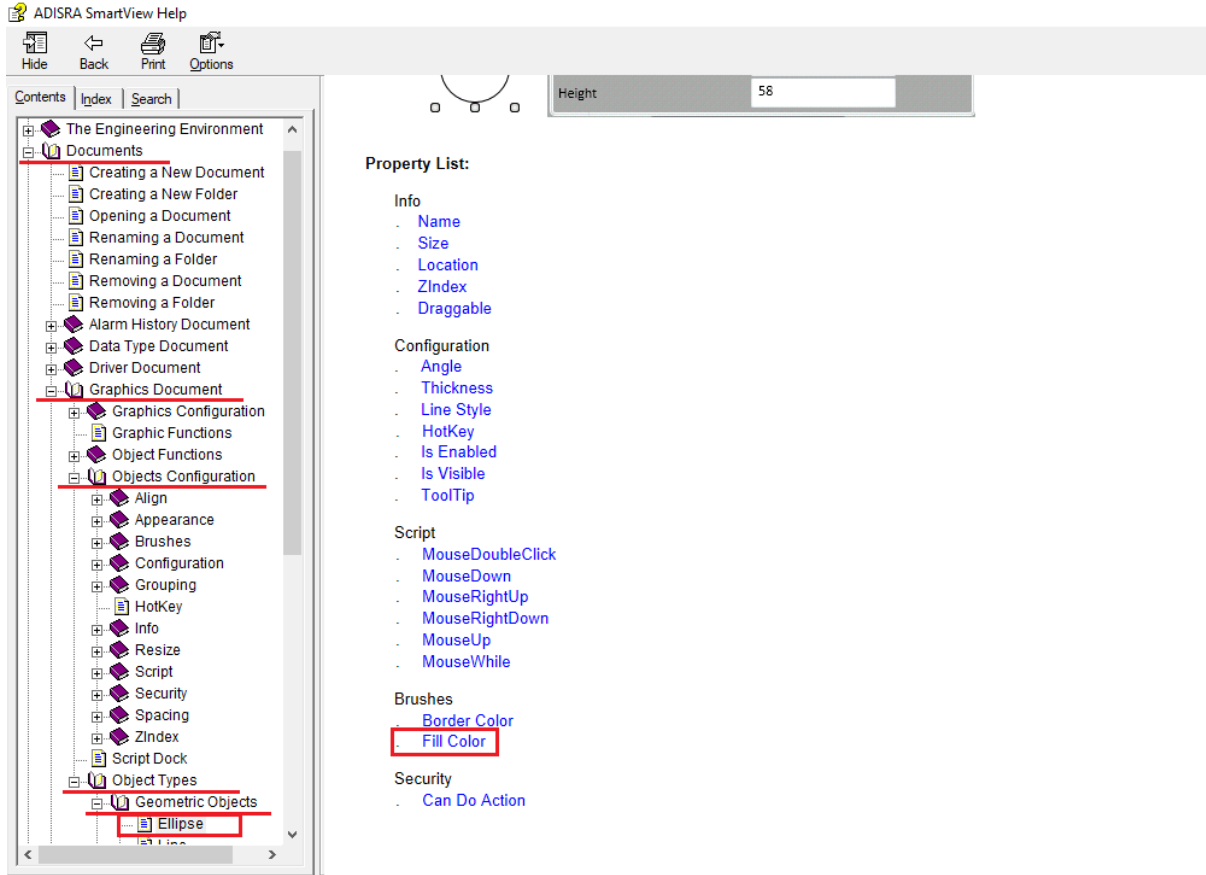


3.4. Using the Help

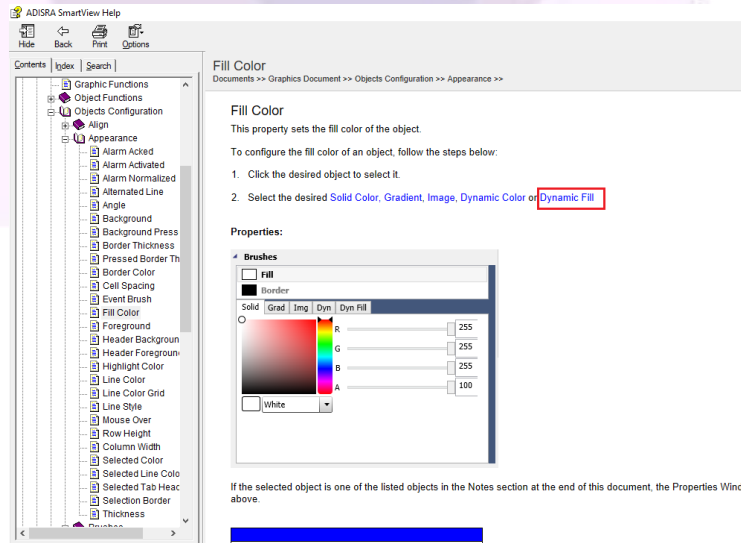
We will show some examples on how to use the help.

3.4.1. Dynamic fill

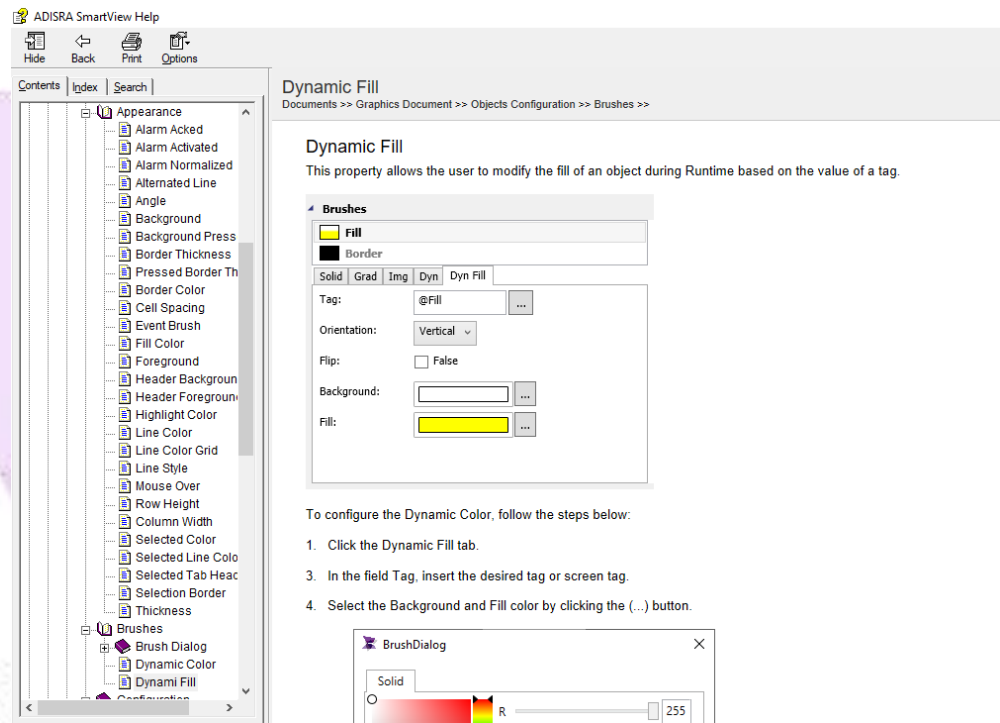
How to use the ellipse dynamic fill? Use the contents tab to locate the ellipse's page, then open it and scroll down the page to find the brushes properties then open the Fill Color by clicking the link. The image below indicates red lined items in the Contents tab until it reaches the Fill Color property.



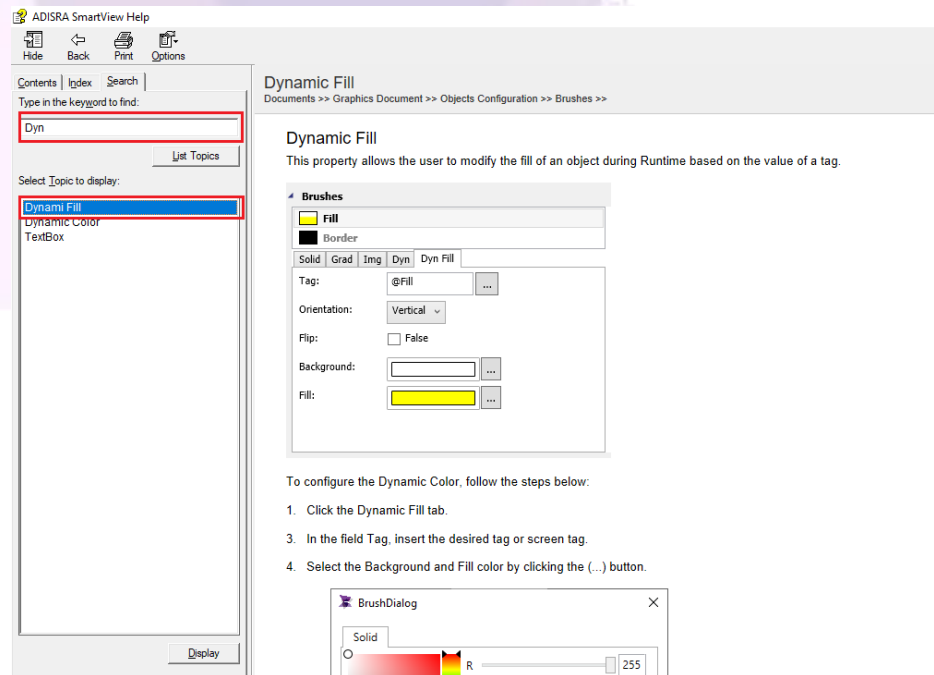
After opening the Fill Color property, the Fill Color page will be displayed, showing different Fill options. Please click in the “Dynamic Fill” option as shown below.



And then the page can be used as an example to help configure the object.

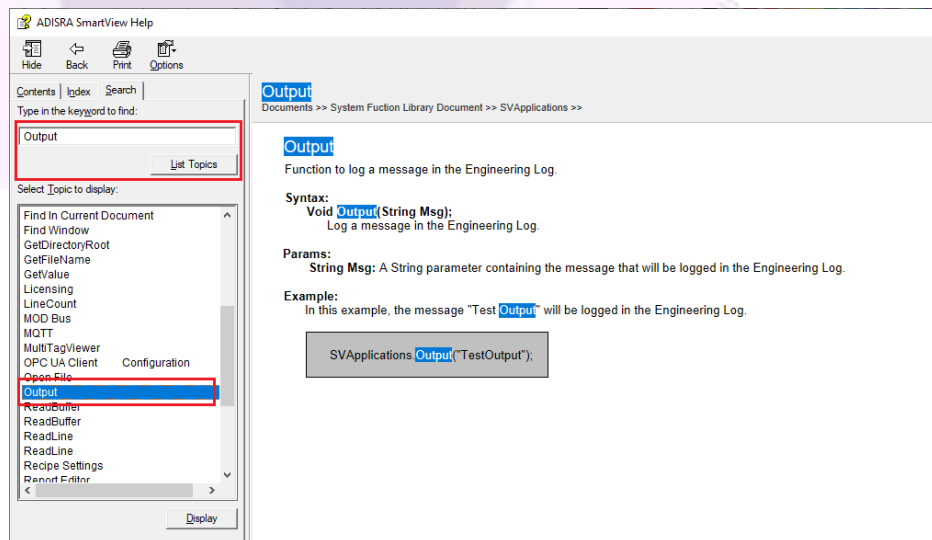
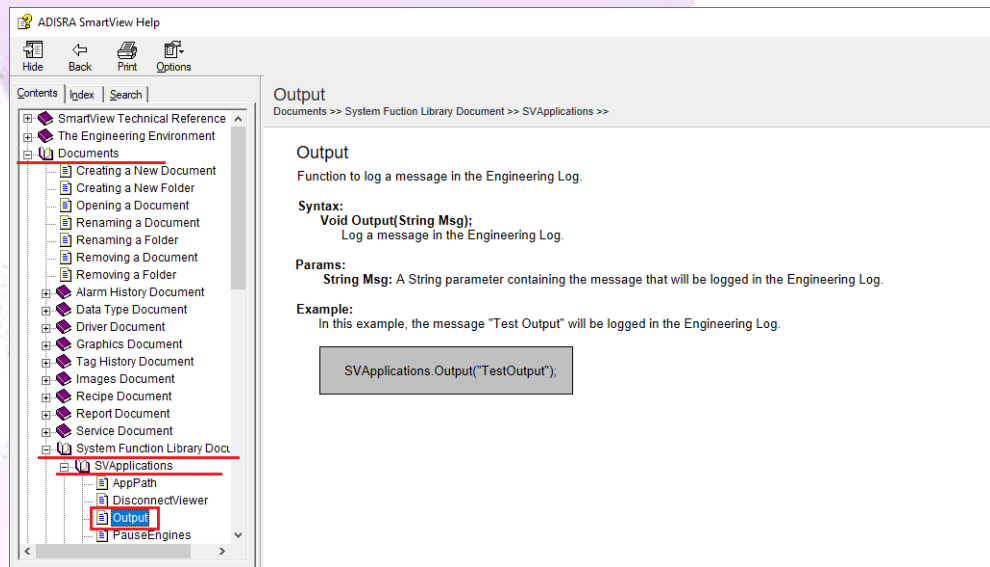


The page may also be located by using the nodes in the contents tab, or search:



3.4.2. System Function Library

Follow the same procedure to use the System Function Library. Find the desired page using the nodes in the contents tab or search for the page. When the page opens, it will have a detailed explanation on how to use the functions and show examples:



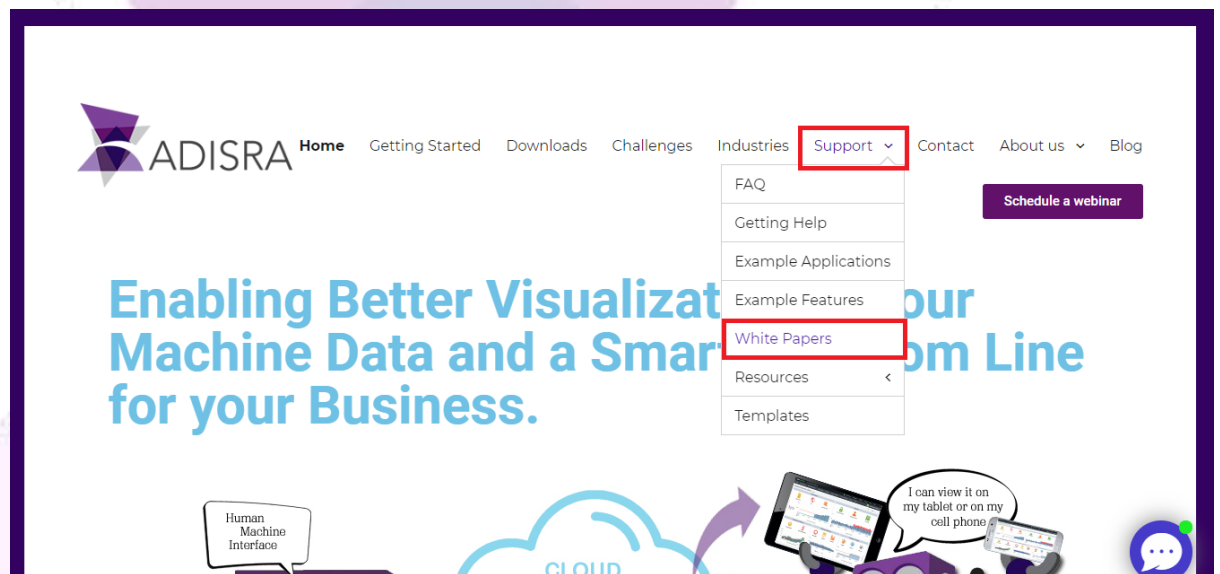
4. Web Site

As mentioned before, the ADISRA web site (www.adisra.com) has guides and documentation:

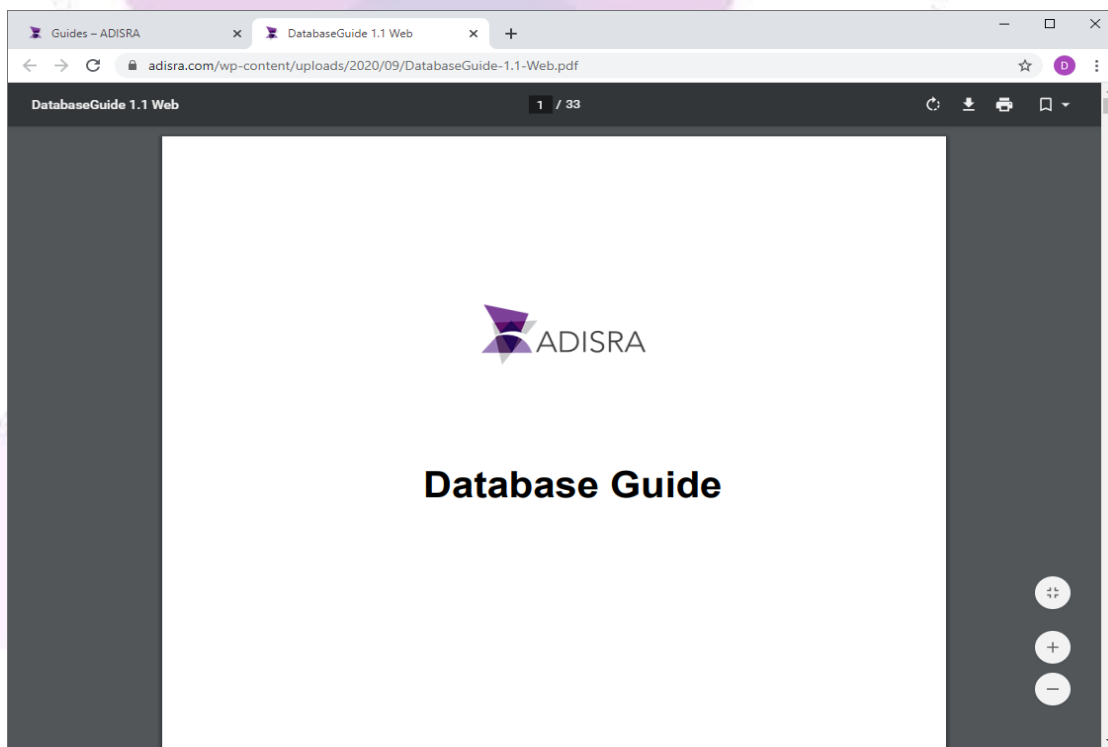
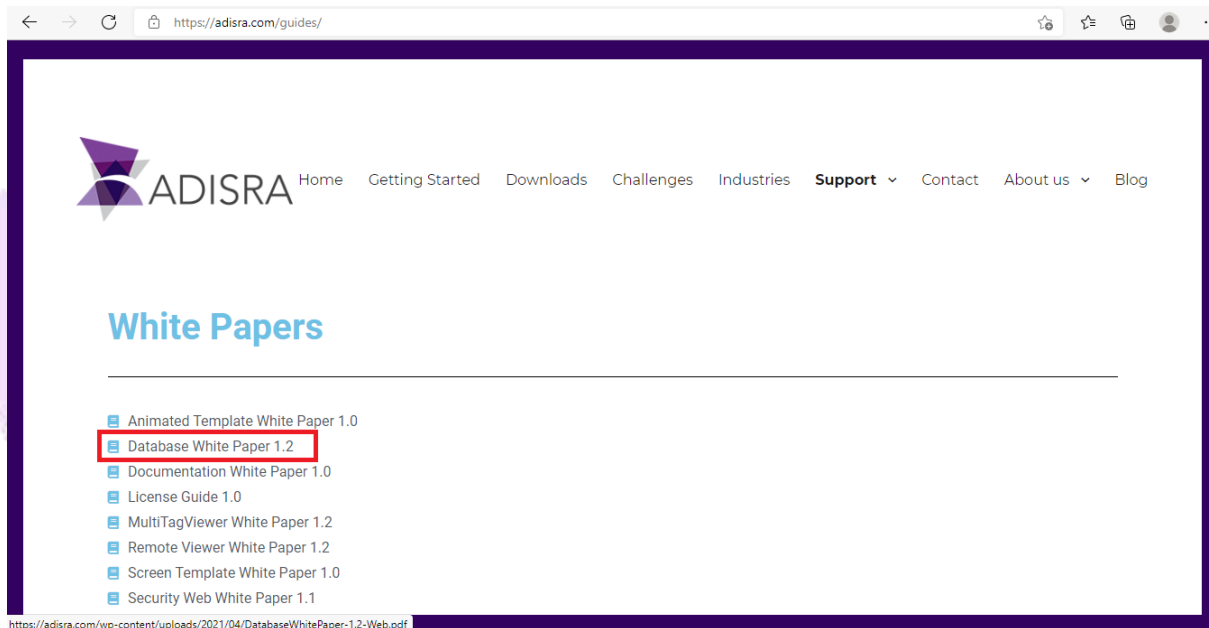
4.1. White Papers

The White Papers are guides that contain detailed specific subject information. The guides are being released according to the user's needs.

To access the White Papers, please use the menu on the web site or directly access the link www.adisra.com/guides:

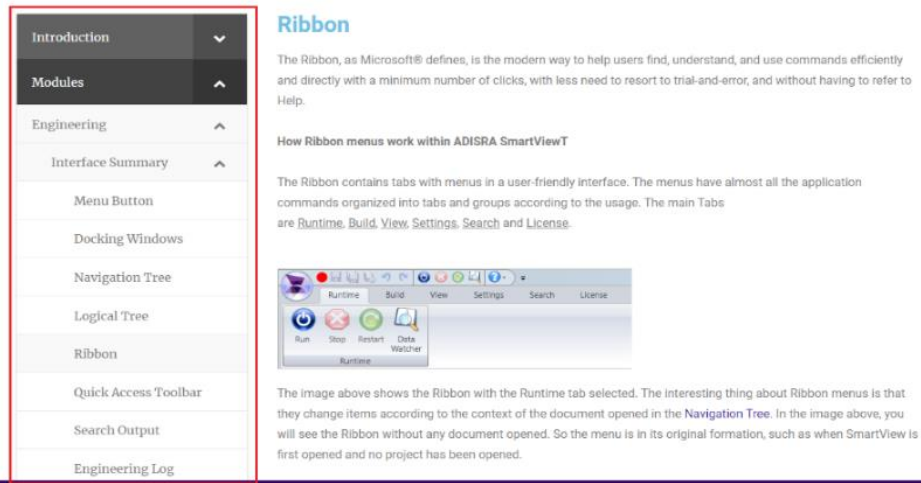
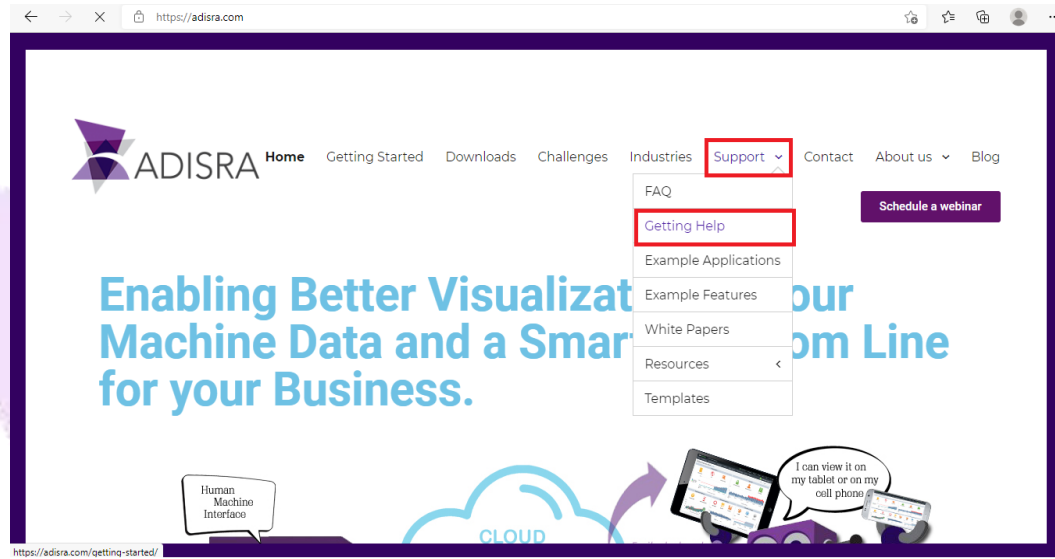


To open White Papers, select the one desired and it will open in a new browser tab:



4.2. Web Help

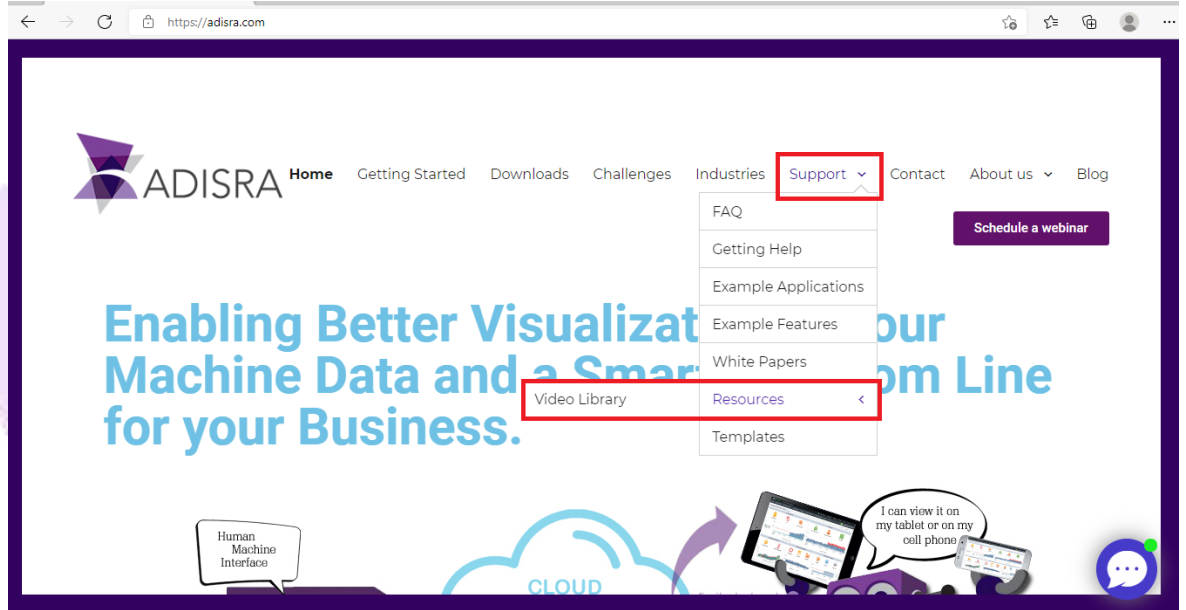
The Web Help is similar to the Help file, but it is divided into main topics. Web Help consists of a side menu with pages and topics that can be expanded.



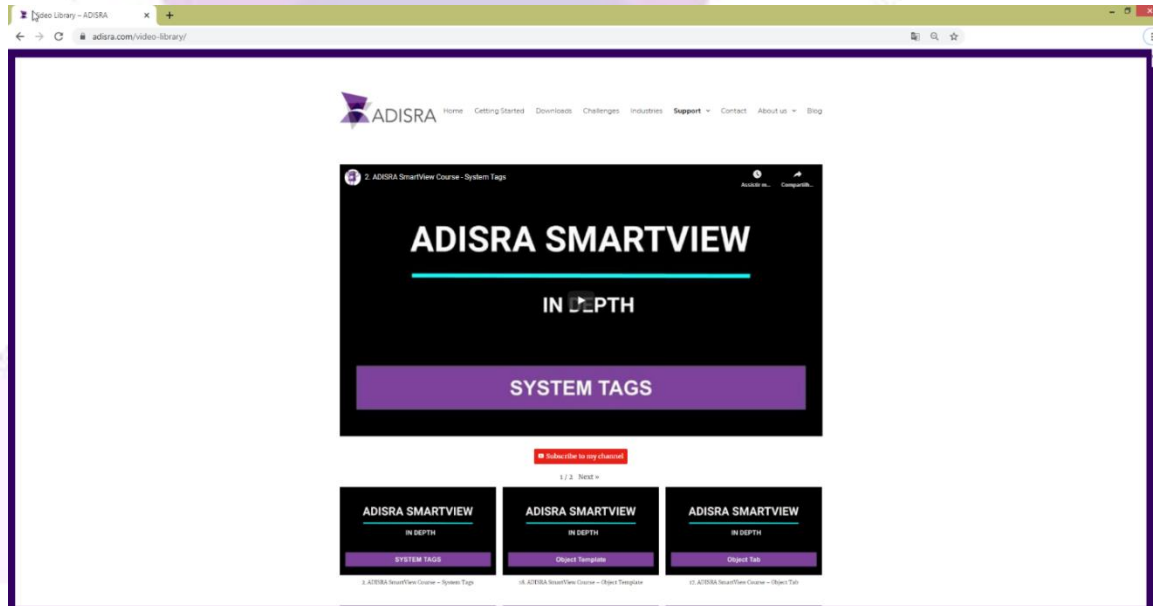
4.3. Videos

The ADISRA website offers a selection of helpful videos including how to use examples and how to configure ADISRA SmartView functions.

To access the videos, please use the menu on ADISRA’s website home page. Select Support, Resources, then Video Library or directly access the link www.adisra.com/video-library:



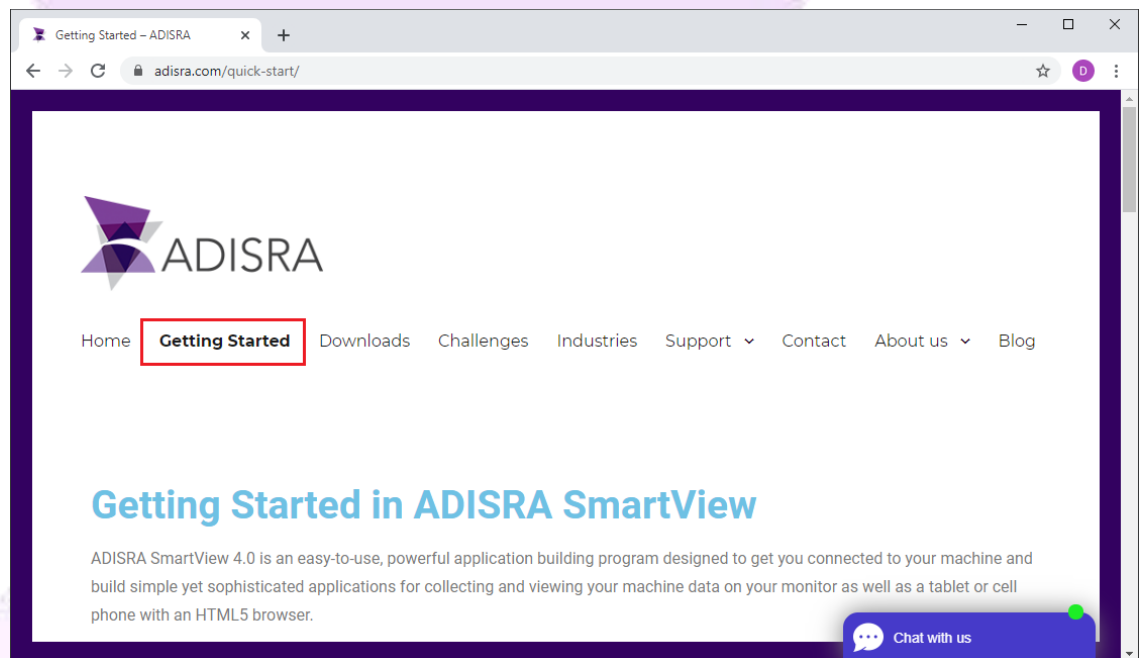
To watch the videos, simply select one and it will automatically play:



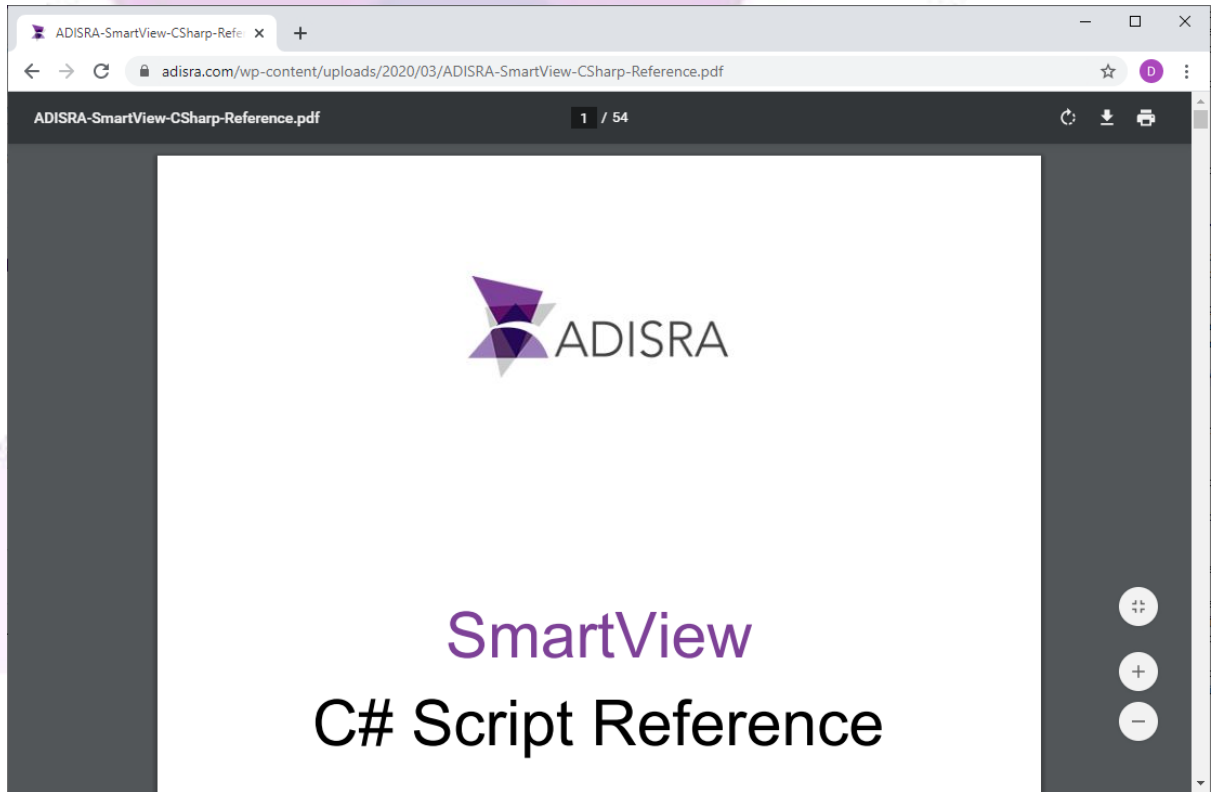
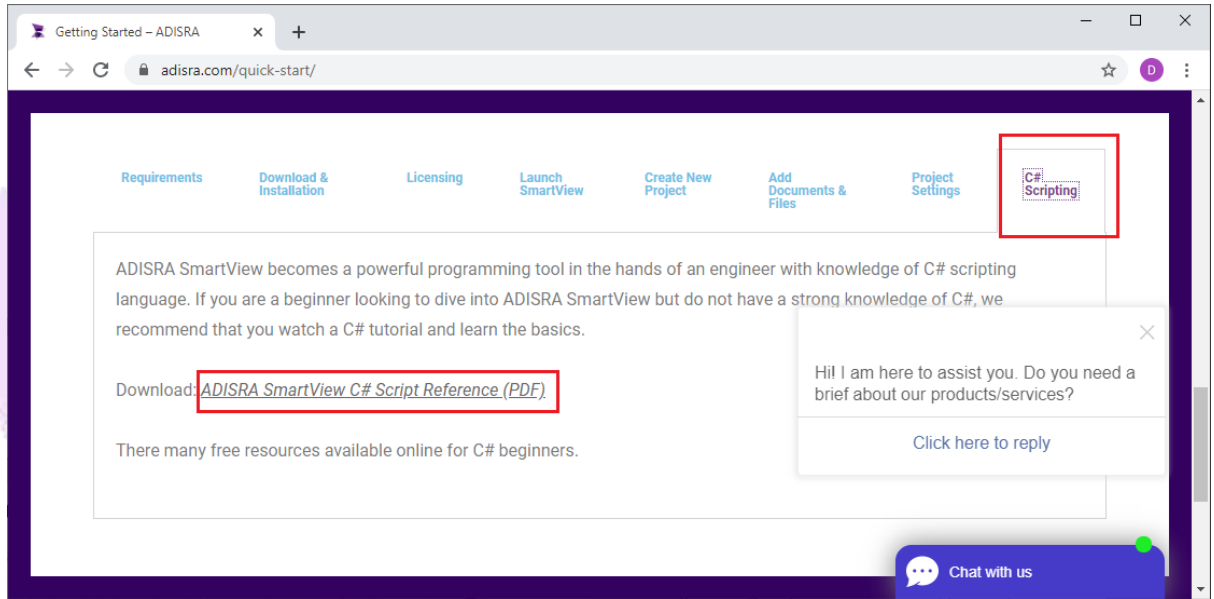
4.4. C# Script

The ADISRA web site provides a document called “C# Script Reference” that helps to understand available C# Scripts and the various places they can be used within the application. It will also explain the build process performed by ADISRA SmartView Engineering Tool and the process outputs.

To access this document, select the “Getting Started” option in the menu on the ADISRA web site home page or directly access the link www.adisra.com/quick-start



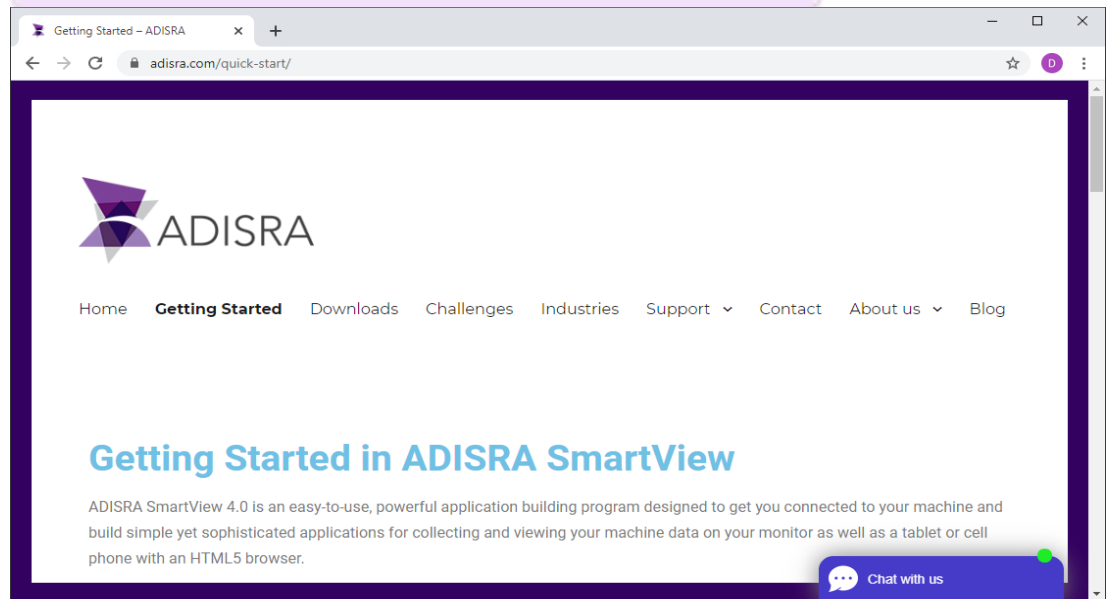
Scroll down the page and locate this menu. Select the “C# Script Option” and click Download:[the name of the document] as shown below in the image:



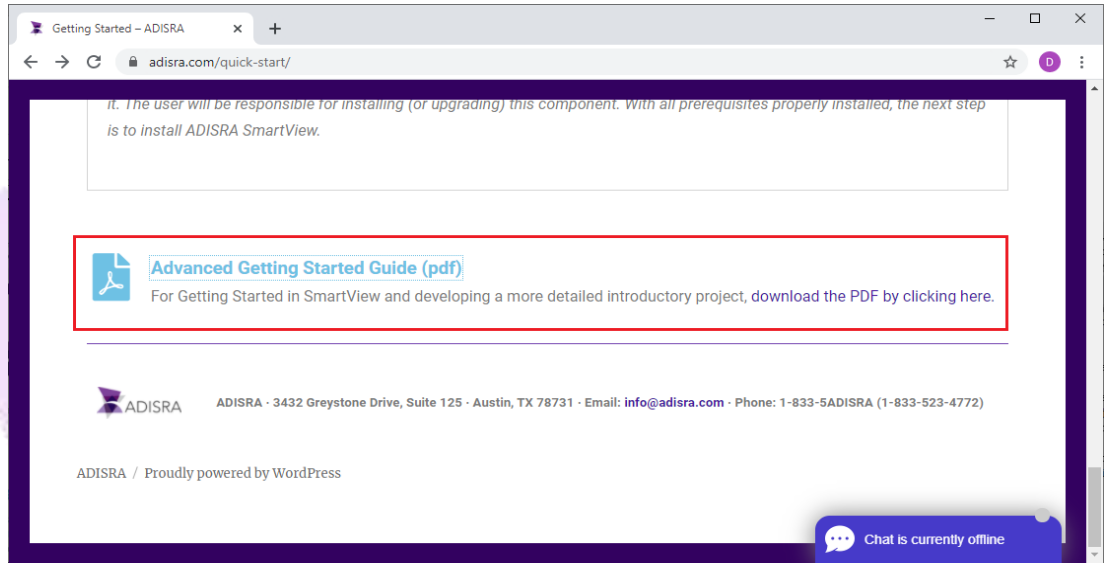
4.5. Getting Started Guide

The ADISRA web site also has a document called “Advanced Getting Started Guide.” This document is a step-by-step guide on how to install, configure, and use ADISRA SmartView. It assists in creating a project and shows the end results.

To access this document, select the “Getting Started” option in the menu on the ADISRA web site home page or directly access the link www.adisra.com/quick-start:



Scroll down to the end of the page to locate the link “Advanced Getting Started Guide”:



5. New Documentation

ADISRA frequently updates existing documentation and creates new documentation. However, users can always suggest new documents and white papers that they would like to have available. ADISRA is customer-focused and will be delighted to provide them.

ADISRA®, InsightView™, and KnowledgeView™ are the registered trademarks of ADISRA, LLC.

© 2022 ADISRA, LLC. All Rights Reserved.

ADISRA · 3432 Greystone Drive, Suite 125 · Austin, TX 78731
Phone: 1-833-5ADISRA (1-833-523-4772)

www.ADISRA.com